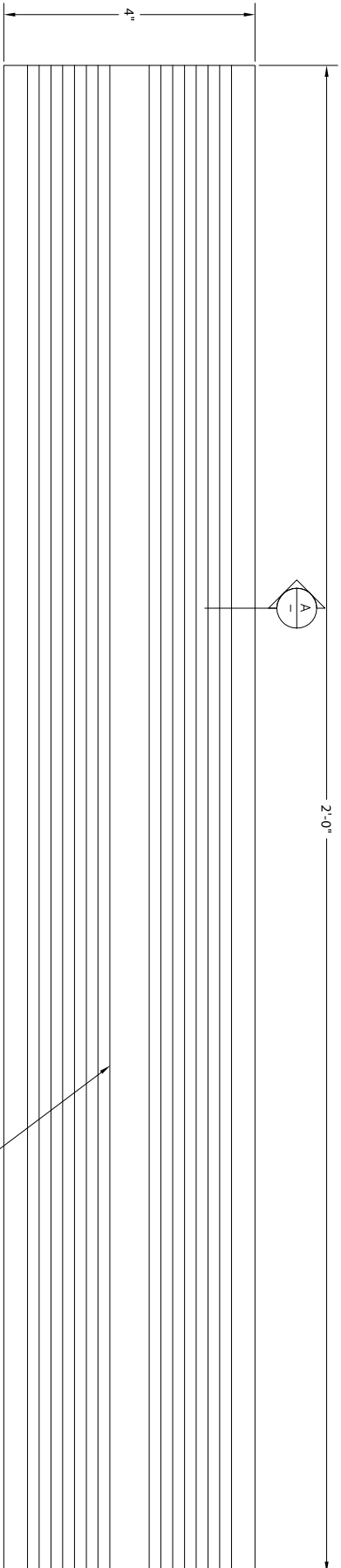
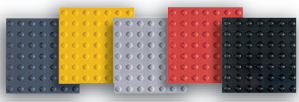


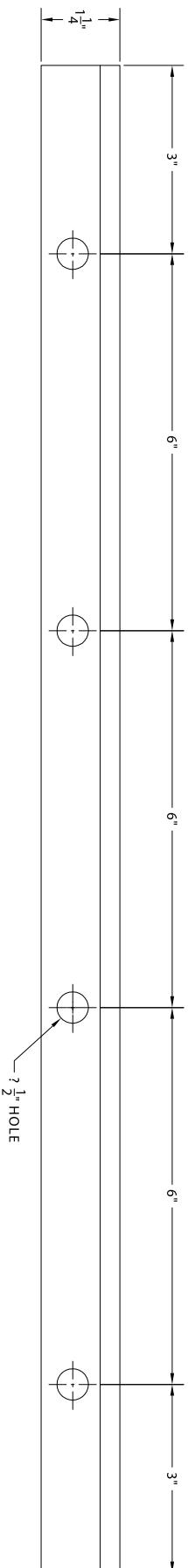
Armor-Tile™

Transit Systems



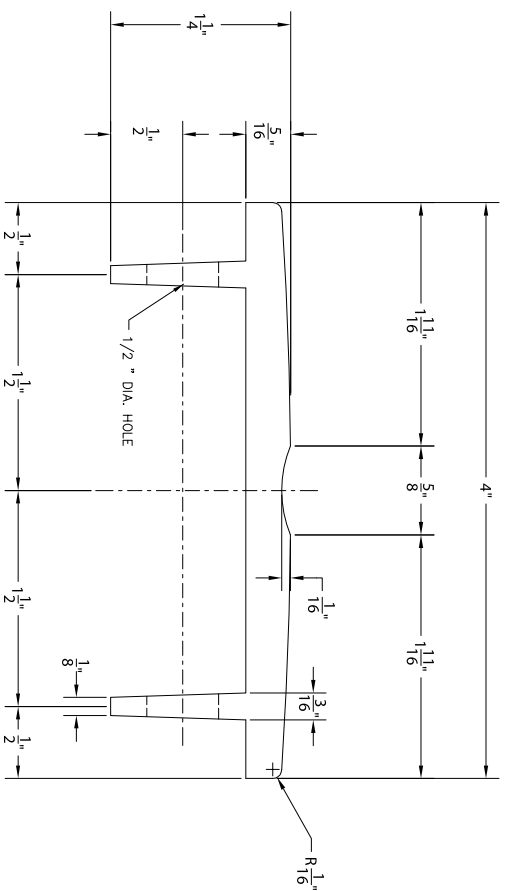
PLAN - DIRECTIONAL TILE

WIDE x 7 GROOVE
IN CENTER OF TILE



ELEVATION

1/2" DIA. HOLE



SECTION A-A



© 2007 ENGINEERED PLASTICS
CONFIDENTIAL AND PROPRIETARY DOCUMENT
ANY ONE OR MORE OF THE FOLLOWING
PATENTS MAY APPLY
U.S. PATENT NO. 5,303,669 5,775,835
6,449,790 AND 6,895,622 B2
C.D.N. PATENT NO. 2,032,532 2,070,984
US PATENTS PENDING:
KENNETH E. SEKELY

MATERIAL LIST

| ITEM | DESCRIPTION | PART NO. | QTY |
|------|----------------|------------|-----|
| 1 | ARMOR-TILE ADA | AT-0023-24 | 1 |

| No. | DATE | REVISION | APPR. |
|-----|----------|----------|-------|
| 01 | 04/27/01 | ISSUED | K.S. |

| DESIGNED | BY | K.E.S. | DATE | 08/91 |
|----------|------|--------|----------|-------|
| DRAWN | M.D. | | 04/27/01 | |
| CHECKED | | | | |

| | |
|----------------------------|--|
| PROJECT MANAGER | |
| TRADE | PART NO. |
| DETECTABLE WARNING SURFACE | |
| MATERIAL | VITRIFIED POLYMER COMPOSITE |
| SUBJECT | Armor-Tile™ Transit Systems SOUND ATTENUATING WARNING SURFACE SYSTEM MATERIAL DRAWING |

PROJECT
ARMOR-TILE DETECTABLE/TACTILE WARNING SURFACE GUIDANCE TILE
4" x 24" CAST IN PLACE
PLANS AND DETAILS

| | | | |
|-------------|------------|----------|---|
| DRAWING NO. | ADA-C-GUID | REV. NO. | 0 |
|-------------|------------|----------|---|