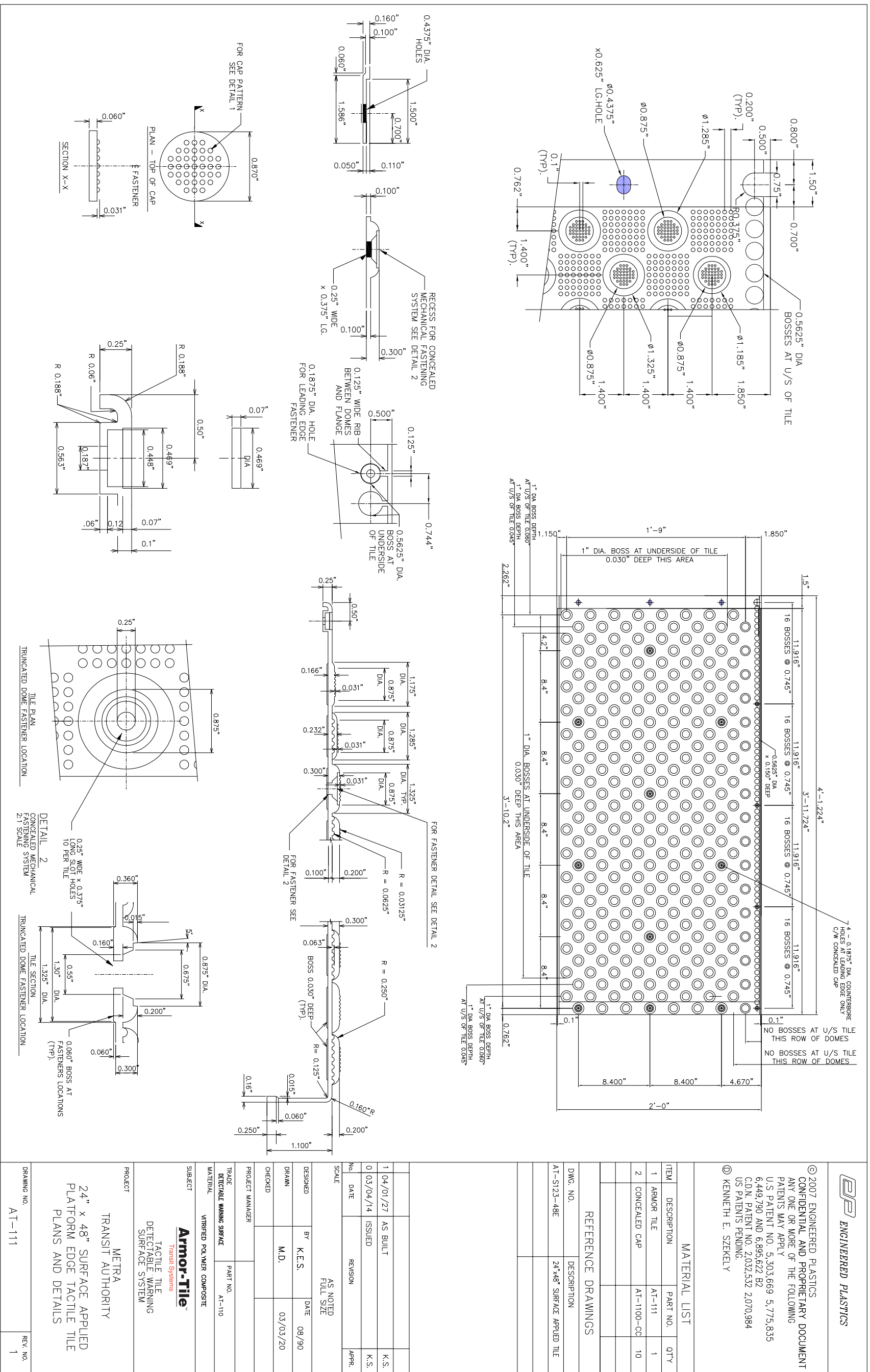
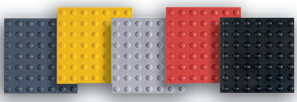


Armor-Tile™

Transit Systems



ENGINEERED PLASTICS

© 2007 ENGINEERED PLASTICS
 CONFIDENTIAL AND PROPRIETARY DOCUMENT
 ANY ONE OR MORE OF THE FOLLOWING
 PATENTS MAY APPLY
 U.S. PATENT NO. 5,303,669 5,775,835
 6,449,790 AND 6,895,622 B2
 C.D.N. PATENT NO. 2,032,532 2,070,984
 U.S. PATENTS PENDING.
 Ⓢ KENNETH E. SZEKELY

MATERIAL LIST

| ITEM | DESCRIPTION | PART NO. | QTY |
|------|---------------|------------|-----|
| 1 | ARMOR TILE | AT-111 | 1 |
| 2 | CONCEALED CAP | AT-1100-CC | 10 |

REFERENCE DRAWINGS

| DWG. NO. | DESCRIPTION |
|-------------|------------------------------|
| AT-5123-48E | 24"X48" SURFACE APPLIED TILE |

| No. | DATE | REVISION | APPR. |
|-----|----------|----------|-------|
| 1 | 04/01/27 | AS BUILT | K.S. |
| 0 | 03/04/14 | ISSUED | K.S. |

| DESIGNED BY | DATE |
|-------------|----------|
| K.E.S. | 08/90 |
| DRAWN | DATE |
| M.D. | 03/03/20 |

| TRADE | PART NO. |
|----------------------------|----------|
| DETECTABLE WARNING SURFACE | AT-110 |

| SUBJECT | PROJECT |
|---|--|
| Armor-Tile™ Transit Systems TACTILE TILE DETECTABLE WARNING SURFACE SYSTEM | METRA TRANSIT AUTHORITY 24" x 48" SURFACE APPLIED PLATFORM EDGE TACTILE TILE PLANS AND DETAILS |

| DRAWING NO. | REV. NO. |
|-------------|----------|
| AT-111 | 1 |

Toll Free: 1-800-682-2525
 Email: info@armortiletransit.com

www.armortiletransit.com